

## Vibrator Shaft

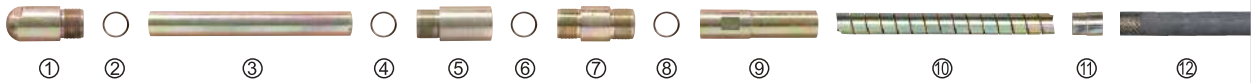


With clip

Model	Bar diameter	Motor power	Vibration frequency	Amplitude (mm)
28mm/6m	28mm	1.1/1.5kw 1.5-2hp	183-200Hz	0.8
32mm/6m	32mm			0.85
38mm/6m	38mm			0.9
45mm/6m	45mm			1.0
50mm/6m	50mm			1.0
60mm/6m	60mm			1.1
70mm/6m	70mm			1.2



Mikasa Type head



NO	Part name
1	Head cap
2	O-ring
3	Case
4	O-ring
5	Bearing pedestal
6	O-ring
7	Hose joint case
8	O-ring
9	Hose joint coupling
10	Outerliner
11	Stop ring
12	Rubber hose
13	Rotary shaft
14	Oil seal
15	Bearing
16	Oil seal
17	Flexible shaft
18	Shaft joint key



Dynapac Type



Mikasa Type



Cylindrical Type



Pin type



Korea type

Model	C	E	S
Head cap	45#	40Cr	40Cr
Case	20Mn	45#	45# heat treatment
Rotary shaft	45#	40Cr	40Cr
Bearing	ordinary	good	Super copper, NSK,SKF
Flexible shaft	Ø10mm/45#	Ø10mm/70#	Ø10mm/65Mn
Rubber hose	Ø30mm/no steel wire	good rubber Ø30mm/40Mn/96pcs	super rubber Ø30mm/65Mn/120pcs

If there are changes, without notice

**Vibrator Set**



GX160+F+C



EY20+F+C(B)



EY20+F+C

**Engine Coupling**



A

B

C

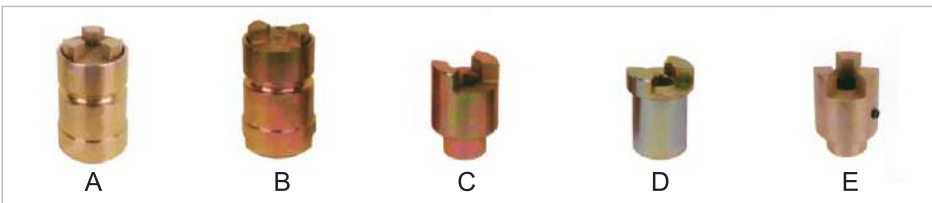
D

E

F

G

H



A

B

C

D

E

**Engine Frame**



FRAME A



FRAME B



FRAME C

## Plate Compactor



Single groove



Four bolts



Double groove



Six bolts



T-90A



T-90B



T-60



T-80



T-80T

Model	T-60	T-80	T-80T	T-90A	T-90B
Engine	air-cooled, single cylinder, 4-stroke				
Engine type	GX160/EY20/ROBY20/EX17/170F				
Size of base plate(L×W)(cm)	50×38	52×48		51×45	51×45
Max. centrifugal force(kN)	12	15		20	20
Vibration frequency(vpm)	5600	5600		4500	4500
Compaction depth (soil) (cm)	30	30		30	30
Forward speed (soil)(m/min)	up to 30	up to 30		up to 30	up to 30
Compacted area (soil)(m <sup>2</sup> /min)	up to 500	up to 680		up to 700	up to 700
Operating weight (kgs)	70	82		95	95

## Plate Compactor

Model	T-100	T-120	T-140
Engine	air-cooled, single cylinder, 4-stroke		
Engine type	GX160/EY20/ROBY20/EX17/170F		
Power (Hp)	5.5	5.5	5.5
Size of base plate(L×W)(cm)	60×46	61×45	62×45
Max. centrifugal force(kn)	20	20	20
Vibration frequency(vpm)	4500	5000	4500
Compaction depth (soil) (cm)	30	30	30
Forward speed (soil)(m/min)	up to 25	up to 25	up to 25
Compacted area (soil)(m <sup>2</sup> /min)	up to 600	up to 630	up to 650
Operating weight (kg)	100	98	120



T-100



T-140

**Plate Compactor**



T-330



Forward & Reverse



T-160A/B



T-330

Model	T-160A/B	T-330A/B
Engine	air-cooled, single cylinder, 4-stroke	
Engine type	GX270/EY28/270F/178F	GX390/188F/186F
Power (Hp)	9	13
Size of base plate(L×W)(cm)	60×50	90×50
Max. centrifugal force(kn)	30	38
Vibration frequency(vpm)	4200	3750
Compaction depth (soil) (cm)	50	90
Forward speed (soil)(m/min)	up to 25	up to 25
Compacted area (soil)(m <sup>2</sup> /min)	up to 700	up to 800
Operating weight (kg)	150	320

A: Forward  
 B: Reverse

**Concrete Cutter**



HCC-14/HCC-16



HCC-18B



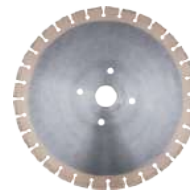
HCC-18A



HCC-18C



HCC-18D



Blade A



Blade B



HCC-18E



HCC-18F



HCC-18G

Model	HCC-14	HCC-16	HCC-18
Weight	87kgs	105kgs	127kgs
Incise Depth	140mm	160mm	180mm
Working Speed	90m/s	90m/s	90m/s
Power	5.5~6.5hp	7.5~9.0hp	10~13hp
Rating Rotal Speed	3600R.P.M	3600R.P.M	3600R.P.M
Water Tank Capacity	20L	25L	32L
Sawing Blade Diameter	350mm~400mm	350mm~450mm	350mm~500mm
Engine	EY20 ROBY20 GX160 168F 170F EX17	EY28 GX270 177F 178F	GX390 188F 186F

## Concrete Cutter



HCC-24



HCC-32

Model	HCC-24	HCC-32	HCC-40
Blade Diameter	600mm	800mm	1000mm
Max.Cutting depth	240mm	330mm	450mm
Water tank volume	50L	50L	50L
Engine	ZS1100G(15-20HP)	ZS1115G(15-20HP)	ZS1130G(25-35HP)
Weight	260KG	300 KG	360KG



HCC-28A



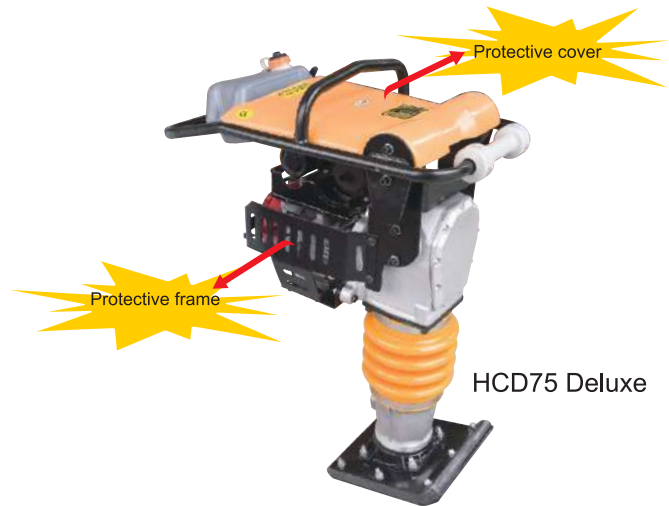
HCC-28B



HCC-40

Model	HCC-28A	HCC-28B	HCC-40
Engine	Kohler CH640	Honda	Lombardini
Weight(kg)	275	310	760
Incise Depth(mm)	250	270	400
Blade Diameter	700	700	1000
Power(HP)	20.5	20	42
Water Tank Capacity	25L	25L	25L
Dimension(mm)	1706*698*1360	1100*810*1040	1735*1020*1710

**Rammer**



Model	HCD70	HCD75	HCD85
Engine	EH12/EY20/GX160/168F/170F		
Type of Combustion	Air-coolde, single cylinder, 4-stroke		
Ramming Force	12kn	14kn	15kn
Leap Height	50-80mm	40-80mm	50-80mm
Ramming Frequency	640-680 times/min		
Ramming Plate Size	340×280mm	345×285mm	345×285mm
Weight	78kg	76kg	86kg
Fuel Tank Capacity	2.0L	2.0L	2.2L



**Rammer**



HCD80



HCD80 Deluxe



HCD90



Model	HCD80	HCD90
Engine	EH12/EY20/GX160/168F/170F	
Type of Combustion	Air-coolde, single cylinder, 4-stroke	
Ramming Force	10kn	12kn
Leap Height	40-65mm	40-75mm
Ramming Frequency	450-660 times/min	640-680 times/min
Ramming Plate Size	330×290mm	330×290mm
Weight	89kg	89kg
Fuel Tank Capacity	2.0L	2.0L

**Roller**

Model	R450	R600
Working Width(mm)	450	600
Frequency(Time/Min)	70	70
Gradeability(%)	25	25
Centrifugal Force(kn)	15	15
Roller Diameter(mm)	420	420-480
Weight(kg)	250	300
Engine Power(hp)	5.5	5.5



Model	R600D	R700D	R800D
Weight(kg)	650	760	825
Vibratory Frequency(Hz)	3600	3600	3600
Centrifugal Force(kn)	17	24	24
Max. travelling Speed(km/h)	3.5	2.5	2.5
Gradeability(%)	20	20	30
Water Tank Capacity(L)	35	35	35
Fuel Tank Capacity(L)	25	25	25
Vibratory Wheel Width(mm)	650	650	650

Model	DR750D
Weight(kg)	900
Vibratory Frequency(Hz)	65
Centrifugal Force(kn)	20
Max. travelling Speed(km/h)	7
Gradeability(%)	30
Water Tank Capacity(L)	50
Fuel Tank Capacity(L)	5.5
Vibratory Wheel Width(mm)	750



## Steel Bar Cutter



Model		GQ40	GQ50
Max.Cutting Diameter	Plain Carbon Steel	≤φ35mm	≤φ45mm
	II -grade Deformed Steel Bar	≤φ32mm	≤φ40mm
Continuous Cutting		32times/min	30times/min
Power of Motor		3kw	4kw
N.W		320kg	400kg
G.W		350kg	430kg
Voltage		380V	380V

## 钢筋弯曲机 Steel Bar Bender



Model		GW40	GW50
Max.Bending Diameter	Plain Carbon Steel	≤φ36mm	≤φ45mm
	II -grade Deformed Steel Bar	≤φ32mm	≤φ40mm
Rotation Speed Working Disk		5-15r/min	5-15r/min
Power of Motor		3kw	4kw
N.W		243kg	340kg
G.W		270kg	370kg
Bend Control Way		Manual	Manual

## Dumper



D30(FJ30)



D15-13DH

Model	D15-13DH	D30(FJ30)
Payload (kg)	1500	3000
Skip capacity (litre)	750	1500
Chassis	Articulated Frame	Articulated Frame
Gearbox	Heavy duty, 3+1 gearbox	Heavy duty, 5+5 gearbox
Bucket tipping system	Hydraulic tipping	
Engine	Yanmar diesel engine, 1105, 18hp, water cooling	Beinei diesel engine by Deutz tech., F3L912, 50hp, air cooling Xinchai diesel engine, 485, 40hp, water cooling
Tyres	Four wheels 750-16	Four wheels 12-16.5
Driving	4*2	4*4
Starting system	Electric start, 12 volts battery	
Gradient	21%	36%
Turning radius (m)	4.5	
Dimensions (mm)	3300*1500*1750	3900*2200*3680
Weight (kg)	1500	2560
Container loading plan	1*20' – 2 units	1*20' – 2 units, 1*40' – 3 units
Other remarks		Self-loading capacity 250 litre or 450kg

## Original Robin Engine



EX17



EY28



EX21



EY20



Model	EY15	EY20	EY28	EX17	EX21	EX27	EX40
Type	Air-cooled, 4-stroke, single cylinder, side valve						
Displacement(cm <sup>3</sup> )	143	183	273	169	211	265	404
Rated output KW(HP)/rpm	2.0(2.7)/3600	2.65(3.5)/3600	4.2(5.7)/3600	2.9(4.0)/3600	3.2(4.4)/3000	4.4(6.0)/3600	6.3(8.5)/3000
Max output KW(HP)/rpm	2.6(3.5)/4000	3.73(5.0)/4000	5.53(7.5)/4000	4.2(5.7)/4000	3.7(5.0)/3600	5.1(7.0)/4000	10.3(14.0)/3600
Direction of rotation	Counterclockwise, facing PTOshaft						
Fuel	Automobile Gasoline unleaded						
Fuel tank capacity(L)	2.8	3.8	5.5	3.2	3.2	5.6	6.8
Lubricating oil capacity(L)	0.6	0.6	0.85	0.6	0.6	1.0	1.2
Carburator	MIKUNI / NICK			Float type			
Starting system	Recoil starter						

## Original Robin Engine



EK30



EH12



EH09 Rammer



EH09



EH10

Model	EH09	EH10	EH12	EK20	EK30
Type	Air-cooled, 4-stroke, single cylinder, side valve				
Displacement(cm <sup>3</sup> )	86	97.1	121	195	296
Rated output KW(HP)/rpm	1.5(2.0)/3600	2.4(3.3)/4200	2.1(2.9)/3600	3.5(4.8)/1800	5.5(7.5)/1800
Max output KW(HP)/rpm	2.1(2.9)/4200	2.4(3.3)/4200	2.9(4.0)/4000	5.1(7.0)/2000	7.4(10.0)/1800
Direction of rotation	Counterclockwise, facing PTOshaft				
Fuel	Automobile Gasoline unleaded				
Fuel tank capacity(L)	1.5	1.5	3.0	3.6	6.0
Lubrication oil capacity(L)	0.3	0.3	0.6	0.6	1.1
Carburetor	Float type				
Starting system	Recoil starter				

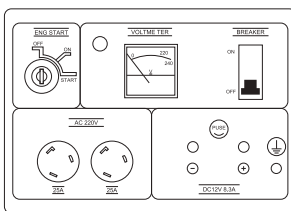
# Diesel Generator



ATS

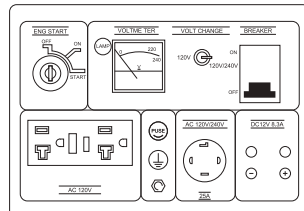


A-type



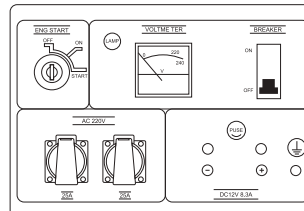
Export Standard 220V,50Hz or 60Hz w DC

B-type



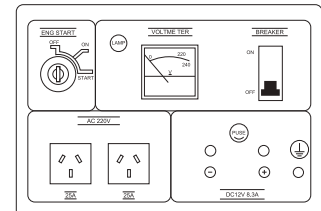
U.S.A 120/240V,60Hz w DC

C-type



Germany Holland 220V, 50Hz wDC

D-type



Australia 220V, 50Hz w DC

Model	2GFCL /2GFCL E		3GFCL /3GFCL E		5GFCL /5GFCL E		6GFCL /6GFCL E		7GFCL /7GFCL E		8GFCL /8GFCL E		10GFCL /10GFCL E	
Frequency(Hz)	50	60	50	60	50	60	50	60	50	60	50	60	50	60
Rated Output(KW)	1.8	2.0	2.8	3.0	4.2	4.6	4.6	5.0	5.5	6.0	6.0	6.5	7.0	7.5
Max Output(KW)	2.0	2.2	3.0	3.3	4.6	5.0	5.0	5.5	6.0	6.5	6.5	7.0	7.5	8.0
Voltage(V)	110,115,120,220,230,240,110/220,115/230,120/240													
Power Factor	1.0	0.8	1.0	0.8	1.0	0.8	1.0	0.8	1.0	0.8	1.0	0.8	1.0	0.8
Engine Model	170F/170FE		178F/178FE		186F/186FE		186FA/186FAE		188FB/188FBE		192F/192FE		198F/198FE	
DC output (V)	12V/8.3A													
Fuel Tank Capacity(L)	12.5													

## Diesel Generator



Super Silent



Model	ES16000LN-ES292F	ES12000LN -EV80	ES12000LN-2V86
Engine Model	ES292F	EV80	2V86
Voltage Regulate	Capacitance & AVR		
AC Frequency (Hz)	50/60		
Rated speed (rpm)	3000/3600	3000/3600	3000/3600
Cont. AC Output (KW)	10/11	10/11	8.5/9
Max. AC Output (KW)	11/12	11/12	9/9.5
DC Output (V/A)	12/8.3	12/8.3	12/8.3
Engine Type	2 cylinders,Air-cooled,4-stroke, Vertical	2 cylinders, V-twin water-cooled, 4-stroke, swirl chamber	2 cylinders, V-Twin, Air-cooled
Bore X Stroke	92X75	80X79	86X72
Compression Ratio	20.5:1	23:01	
Fuel Tank Capacity (L)	25	25	30
Fuel Consumption (G/KWH)	267		268
Starting System	Electric Start	Electric Start	Electric Start
Fuel	0#(Summer), -10#or -20#(Winter) diesel		
Lube Type	CF10W40		
Lube Capacity (L)	2.75	2.27	1.7
20"/ 40'FCL	36/72	26/52	26/52
Net Weight (KG)	420	350	265



## Diesel Water Pump



WP60D-198F



Model	WP20D/DL	WP30D/DL	WP40D/DL	WP60D/DL
Dimension	2"	3"	4"	6"
Suction Head(m)	8	8	8	6
Total Head(m)	26	25	31	15
Rated Capacity(m <sup>3</sup> /h)	36	60	80	200
Engine Model	170F	170F/178F	178F/186F	192F/198F
Fuel Tank Capacity(L)	2.5   12	3.5   12	5.5   12	5.5   12

## High Pressure Pump



Model	HP15D/DL	HP20D/DL	HP30D/DL
Dimension	1.5"	2"	3"
Suction Head(m)	8	8	7
Total Head(m)	60	55	80
Rated Capacity(m <sup>3</sup> /h)	18	30	40
Engine Model	170F	178F	186F
Fuel Tank Capacity(L)	2.5   12	3.5   12	5.5   12

## Cast Iron Pump

Model	CP15-171	CP20-A	CP20-B	CP30-188	CP40-150
Diameter(mm)	40 (1.5")	50 (2")	50(2")	(3" )80	100 (4")
Impeller Diameter	171	175	198	188	150
Total head (m)	70	74	85	78	50
Suction head (m)	7	7	7	7	7
Max Capacity (m <sup>3</sup> /h)	22	30	35	42	98
Output shaft	3/4-16UNF		1-14UNS-2A		
Power (HP)	5.5	6.7	10	10	13
Weight(Kg)	8.7	10.5	12.5	20	22.8

